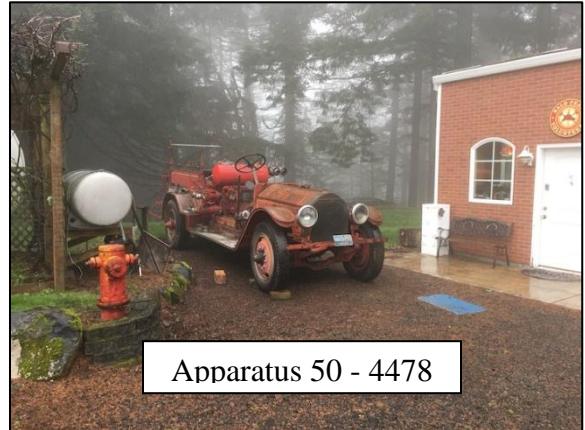


1924 American LaFrance Pumpers

In 1923, Portland would write the specifications for four new fire apparatus. American LaFrance was the preferred manufacturer by Portland Fire at that time. Between February and May of 1924, four new Type-55, 1,000 gallon permit pumpers, would arrive and be put into service. These were serial numbered 4478, 4479, 4636, and 4367.

Portland Fire began numbering motorized apparatus at the time of the first purchase of such in 1913. Previously, horse-drawn and hand-pulled apparatus had been inventoried by their manufacture serial number only. The four American LaFrance fire engines discussed here would become Apparatus 50, 51, 52, and 53. While all four would receive various assignments at fire stations, their identity over the course of their service would always be their assigned Apparatus Number.



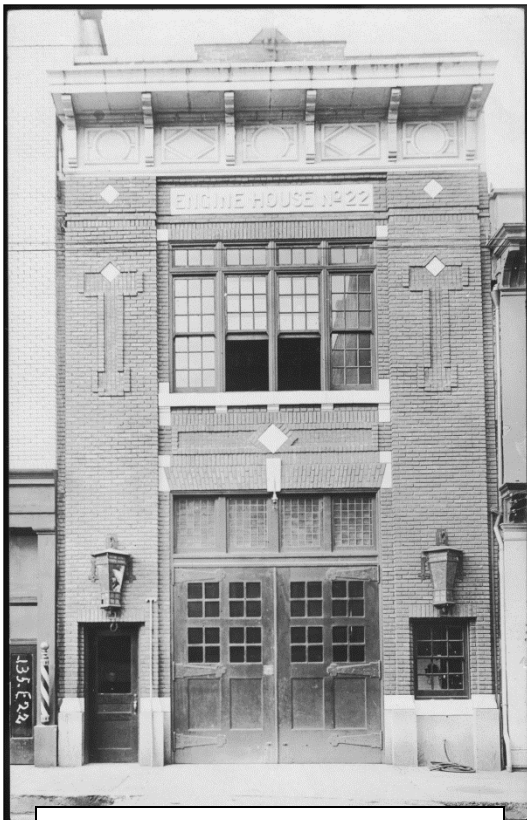
Apparatus 50 - 4478

Two of the four are known to remain in existence, Apparatus 50 and 51. At one time, they were both owned by the same man. They would be sold and as of this writing, their future is yet to be known.

Apparatus 51 has enjoyed the most care over the course of its life. After its retirement in 1959, it eventually fell into the ownership of Jerry Heater, an Oregon fire service buff who was also part of the development of the Oregon Fire Service Museum. After his death in 2010, Apparatus 51 would be purchased by Matt Simek of Newberg, Oregon, another collector. His ownership would end in 2023 and Apparatus 51 would go on the open market with a future yet to be told.

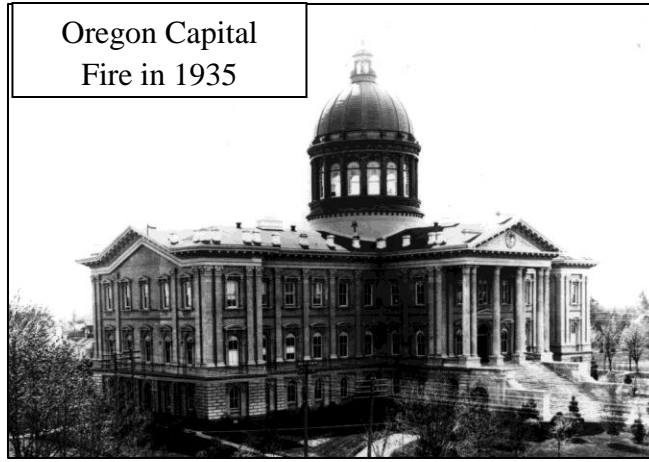
Apparatus 51 began its service with Portland Fire when purchased for \$12,575. It would be assigned as Engine 22, which at that time was located at 1233 SW 1st Avenue in downtown Portland.

At 6:43 pm on April 25, 1935, Apparatus 51, along with a task force of other fire apparatus, was dispatched to a fire in the state capitol building in Salem, Oregon. A custodian reported smoke in the building and further investigation found a fire in the basement. The fire grew quickly and even with the aid of other departments, like Portland, the state capitol building would be lost.

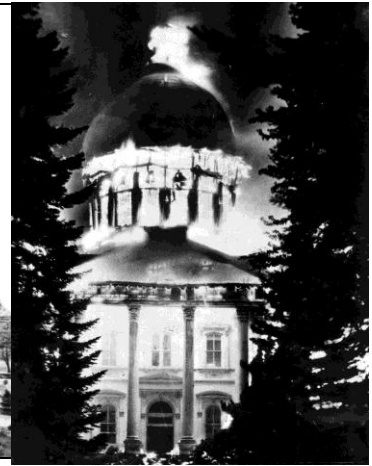


Station 22 - 1233 SW 1st Ave.

In 1939, Apparatus 51 would be reassigned as Engine 32 in St. Johns. Located at 7214 N. Philadelphia Avenue, the fire station was actually located in the basement of the building that was originally the St. Johns' City Hall. After the 1915



Oregon Capital Fire in 1935



Station 32 - 7214 N. Philadelphia

annexation of St. Johns, the building became North Precinct for the Portland Police.

By 1951, Apparatus 51 would be reassigned as a reserve fire engine located at Station 23 - 2915 SE 13th Place. Here it would ride out the rest of its service life, finally being decommissioned in 1959.

As was common in Portland's early motorized years, Apparatus 51 was converted from its original American LaFrance engine to Hall-Scott model 177, straight 6 cylinder configuration (Hall Scott #360150) bored out to 1100 cubic inches. This may have occurred in the late 1930s during its transition

from Station 22 to 32. It also received hydraulic front brakes, vacuum brake assist, a generator, and an electric starter.

It is amazing to see these incredible machines remain alive and well cared for 100+ years later. Thanks to those who keep these pieces of history alive for all to see.

Apparatus 51 - 4479



Station 23 - 1917 SE 7th Avenue



Apparatus 51 - 4479

Special note - 4479 is misidentified in Portland's 1942-43 Annual Report, wrongly identifying the Hall Scott motor number as 300375 and calling it Apparatus 43. Please disregard this finding.

#END#

www.PortlandFireHistory.com